



Coalfield Community Transport
Unit 4
Caponacre Industrial Estate
Cumnock
KA18 1SH
Tel: 01290 429088
enquiries@yellowbuses.org.uk
www.yellowbuses.org.uk

DAYHOPPER BROCHURE

Kilmarnock



***FEBRUARY, MARCH &
APRIL 2026***

Coalfield CT
Connecting Communities
- Since 2002 -

01290 429 088
www.yellowbuses.org.uk

Dear Member,

We hope you enjoyed the festive season with family and friends. Hopefully you have your travelling boots ready for 2026 because we are going to plan some amazing trips. Did you know that even relatively small increases in physical activity can contribute to improved health and quality of life. Regular physical activity provides a range of physical, mental, social, environmental, and economic benefits.

So, join us on the trips away and come and discover new places. We are exploring interest theatre trips. We want to hear what interests you! Use the form on page 5 or call us to note your interest.

Our booking day seems to be working well. To ensure everyone has an opportunity to book we will **NOT** take any bookings before:

Tuesday 20th January @ 9.30AM

When you call on Booking day you will be prompted to press option 1. Please leave your name and clearly state the trip **dates** that you require, once you have done so please hang up. Your message will be dealt with in the time order in which you made the call.

Thank you for your continued support!

Best Wishes

*From all of the staff at Coalfield
Community Transport*

Caring for someone

NHS
24

NHS 24 provides a
range of services to
support carers



Many people do not recognise themselves as carers.

A carer is anyone who is unpaid for their caring and looks after a friend, family member or neighbour due to old age, physical or mental illness, disability or addiction.

There is no minimum amount of time you need to support someone for you to be considered a carer.

DAYHOPPER BOOKINGS

OPENING HOURS MONDAY—FRIDAY
9:00 AM TO 4:00PM

ALL BOOKINGS MUST BE PAID 7 DAYS IN
ADVANCE.

IF YOU WISH TO CANCEL YOUR TRIP PLEASE CALL
AND LET US KNOW AS SOON AS POSSIBLE.

CANCELLATIONS WITHIN 7 DAYS OF THE TRIP
WILL NOT BE REFUNDED

IF COALFIELD CANCEL THE TRIP A FULL
REFUND WILL BE GIVEN.

IF YOU REQUIRE TO TAKE A CARER WITH YOU
PLEASE LET THE OFFICE KNOW WHEN YOU MAKE
YOUR BOOKING.

WE ACCEPT CARD PAYMENTS OVER THE PHONE OR IN THE OFFICE



Coalfield Community Transport has had a very busy year
with trips & Awayhopper's thanks to all our members.

2026 Events

Our Away hoppers have proven to be
successful, watch this space throughout the year.

28th March @ 7.30pm Gaiety Theatre Ayr,
Thank Abba for the Music

29th April @7.30pm Gaiety Theatre Ayr,
Walk Right Back- Everly Brothers Story

Word Search

Name: _____

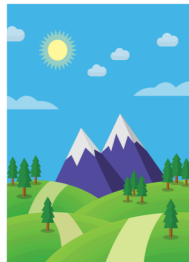
Travel Destinations



X G L O N D O N W O G Y L T A L S I R E
E L E H C I R U Z X Z N U C N A C V E P
Y K W C H G R I Z N Q O S O H W Z B W E
M E N Q R Q V W Q W D I R D A M Z Y A B
E W O W A L U B N A T S I R T O O R G Q
D Z B G M V Z K M S U V W A D D E C C Z
I J S B S T N D A E S W N O G V U J G U
N E I A T R D T T H O J D S U P A R I S
B U L N E D Z V H U E G Q O D O I X V T
U G P G R I C S E U I S C T I E V J Z Q
R A A K D M D I N N V N N A E C I Q R E
G R J O A B C B S B A P B O E N E U U M
H P N K M C B S F V A U W Z X E N E A O
I N I R O T N A S C D R T F B R N B X R
V M I N I L R E B I Q W C H Q O A E N O
I I K N E O J I U A M D K E B L V C G D
O Y K O T I A T U R Z V V C L F Y U J B
C A I R O R A S P W Z I X V A O Q A P A
C H O N O L U L U B A L I J V B N W F B
I L G X B Y E N D Y S K H Q T X V A N M

Word list:

AMSTERDAM	CANCUN	LONDON	ROME
ATHENS	DUBAI	MADRID	SANTORINI
BALI	EDINBURGH	MAUI	SYDNEY
BANGKOK	FLORENCE	PARIS	TOKYO
BARCELONA	HONOLULU	PRAGUE	VANCOUVER
BERLIN	ISTANBUL	QUEBEC	VIENNA
CAIRO	LISBON	RIO	ZURICH



Health information

NHS inform is NHS 24's online health and care information service.

At www.nhsinform.scot you'll find information on common symptoms and what to do to help look after your own health and wellbeing and the person you are caring for.

Scan the QR codes or visit the links for specific advice on fall prevention, mental health support and palliative care.



Fall prevention

Information on how to reduce the risk of falling and what to do if someone you are caring for has a fall.

www.nhsinform.scot/falls



Mental health services

Supporting someone else as a carer can impact your mental health.

NHS 24 mental health services can listen, offer advice, and guide you to further help if required.

www.nhsinform.scot/mental-health-support



Palliative care

If you are caring for, or supporting someone who is at the end of their life or who has a terminal illness, we can provide access to advice and help.

www.nhsinform.scot/palliative-care-advice

What if I can't get online?

If you are well and have a general health information question, phone:

NHS inform on 0800 22 44 88

Monday to Friday from 9am to 5pm.



What is SDS and how can we help?

Lots of people in Scotland need support to live well. You might call it care, support, help at home or social care.

However you describe it, if you're in Scotland and you access support through your local council, this is Self-directed Support.

Self-directed Support, or SDS, is designed to give people as much or as little control as they want over the support or services they receive.

At the Community Brokerage Network, we're funded by the Scottish Government to provide free information and advice on Self-directed Support (SDS) for everyone in Ayrshire regardless of their circumstances, age, and level of ability.

If you've been told you're not eligible for formal support, we can help connect you with other community-based resources.

We do not provide hands on social care for people, but we do try to help them get what they need.

If you or someone you know requires support and may be eligible, please get in touch and we'd be happy to help.

📞 07769 698 606

✉ info@communitybrokeragenetwork.co.uk

www.communitybrokeragenetwork.co.uk



WE WANT TO HEAR FROM YOU!

Hendrika, our new development officer wants to hear your views. Share any ideas or suggestions you may have, such as trip ideas or service improvement suggestions. Meet Hendrika at the pop up stalls in your local area, see below for details!

Suggestions: _____

Come and meet me every 3rd Monday of the month at the Kilmarnock Brain Health & Dementia Centre at 10am till 2pm, 8-10 College Wynd Kilmarnock.

- Monday 19th January
- Monday 16th February
- Monday 16th March

Come and meet me at: Dalmellington Community Centre at 9am till noon, 38 Ayr Road Dalmellington.

- Wednesday 21st January
- Wednesday 18th February
- Wednesday 18th March

FEBRUARY 2026

Day	Date	Destination
Thursday	5rd	Rouken Glen/Braehead
Thursday	12th	Glasgow Fort/Toby Carvey
Wednesday	18th	Dumfries/Thornhill
Tuesday	24th	Local Lunch

Pick Up From	Return Time	Cost	INFORMATION
9.00 - 10.00	5.00 - 6.00	£20	
9.00 - 10.00	5.00 - 6.00	£20	
7.30 pm		£16	TICKET NOT INCLUDED CALL WITH INTEREST
9.00 - 10.00	5.00 - 6.00	£20	

ALL THE WAYS TO GET INVOLVED

Getting involved, sharing experiences or providing feedback can be a small thing that makes a huge difference!

There are lots of ways and one may suit you best. Get in touch to discuss any and how we can support you to share your voice.

- Our Stakeholder Forum
- Our Locality Groups & Network
- Involvement groups related to specific services
- We regularly review and consult on specific services and plans
- Sign up for our Newsletter
- Come along to our Board meeting (we have 6 per year)

You can also follow us on Twitter and Facebook:

[@EAHSCP](#)

[f](#) East Ayrshire Health & Social Care

You can also share your experiences or give feedback via www.careopinion.org.uk



EAST AYRSHIRE

Health & Social Care Partnership

ABOUT US

East Ayrshire Council and NHS Ayrshire and Arran work together to deliver social care and community health services, forming our organisation.

This partnership offers opportunities to create more joined up services. We design these with our local communities and deliver them together. As a result, services are better and simpler for you to access and use.

[01563 554 400](tel:01563554400) OR [07826 914638](tel:07826914638)

LORNA.MCILREAVY@EAST-AYRSHIRE.GOV.UK

WWW.LIVINGWELLES.CO.UK

[THE JOHNNIE WALKER BOND,
15 STRAND STREET,
KILMARNOCK,
KA1 1HU](#)

EAST AYRSHIRE

Health & Social Care Partnership

Your Voice and our local Health & Social Care services





IMPORTANT PHONE NUMBERS

EMERGENCY NUMBER: 999

NON-EMERGENCY NUMBER: 101

**HEARING AND SPEECH IMPAIRMENT
TEXTPHONE SERVICE: (NON-EMERGENCY): 18001 101**

**NON-EMERGENCY MEDICAL ADVICE:
(NHS-24) 111**

APRIL 2026

Day	Date	Destination
Wednesday	15th	Mystery Tour
Thursday	23rd	Musselburgh
Wednesday	29th	Everly Brothers -Walk Right Back Gaiety Theatre
Thursday	30th	Largs



GIVE THE
GIFT
OF TRAVEL
THIS CHRISTMAS

Surprise your friend with a membership and a Day Hopper Away trip for just £30 and get £5 off of your next Day Hopper Away trip.

CALL THE OFFICE ON: 01290 429088



Pick Up From	Return Time	Cost	INFORMATION
9.00 - 10.00	5.00 - 6.00	£20	
9.00 - 10.00	5.00 - 6.00	£20	FOOD NOT INCLUDED
9.00 - 10.00	5.00 - 6.00	£20	
10.00 - 11.00	3.00 - 4.00	£16	FOOD NOT INCLUDED

OUR VISION

OUR STAKEHOLDER FORUM

OUR LOCALITY GROUPS



Our Strategic Plan for 2021-30 sets out our vision of:
"Working together with all of our communities to improve and sustain wellbeing, care and promote equity."

Central to that is ensuring people are at the heart of everything we do. This means we are passionate about putting people and communities first and believe everyone should have a say in our own local health and social care services.

So if you would like to get involved and have your voice help to improve our services then there are many ways you can!



Our Stakeholder Forum is an opportunity for people, users of our services, carers and organisations from the community to come together to share their views on what will be discussed at our board and committee meetings.

Forum members also share experiences, local issues and bring suggestions for how we can improve our services together.

The Forum meets 8 times per year in venues across East Ayrshire.



Our locality groups bring a wide range of people together who support our work in health and social care. This allows us to concentrate on the things that matter local to where you live in East Ayrshire.

We have three locality groups in East Ayrshire:

- Northern (Annick and Irvine Valley)
- Kilmarnock (including Crosshouse and Hurlford)
- Southern (Cumnock and Doon Valley)

You can join a group or our Locality Network and be involved as much as you would like.

MARCH 2026

Day	Date	Destination
Tuesday	3rd	East Kilbride/ The Kittoch
Wednesday	11th	Aberfoyle
Friday	20th	Carlisle
Thursday	26th	Drivers Choice—Mystery tour
Saturday	28th	Thank ABBA for the Music @ Gaiety Theatre
Tuesday	31st	Perth

Pick Up From	Return Time	Cost	INFORMATION
9.00 - 10.00	5.00 - 6.00	£20	FOOD EXTRA
9.00 - 10.00	5.00 - 6.00	£20	
9.00 - 10.00	5.00 - 6.00	£20	
9.00 - 10.00	5.00 - 6.00	£20	
7.30pm		£16	TICKET NOT INCLUDED CALL WITH INTEREST
9.00 - 10.00	5.00 - 6.00	£20	



- Pension Queries
- Benefit Queries
- Housing
- Energy questions
- Human Right
- Digital Inclusion
- Debt Advice

Drop-in sessions at:

Cumnock, 77a Townhead Street
Monday, Wednesday and Friday
10am - 1pm

Kilmarnock, The Gateway Centre

Monday, Tuesday, Thursday
9.30am - 3pm
Friday 9.30 - 2.30pm

EXPLORING INTEREST

We at CCT would like to find out if there is interest in visiting the Gaiety Theatre, Ayr.

The following performance are available:

> 28th March @ 7.30pm ☐
Gaiety Theatre Ayr, Thank Abba for the Music

> 29th April @7.30pm ☐
Gaiety Theatre Ayr.
Walk Right Back- EverlyBrothers Story